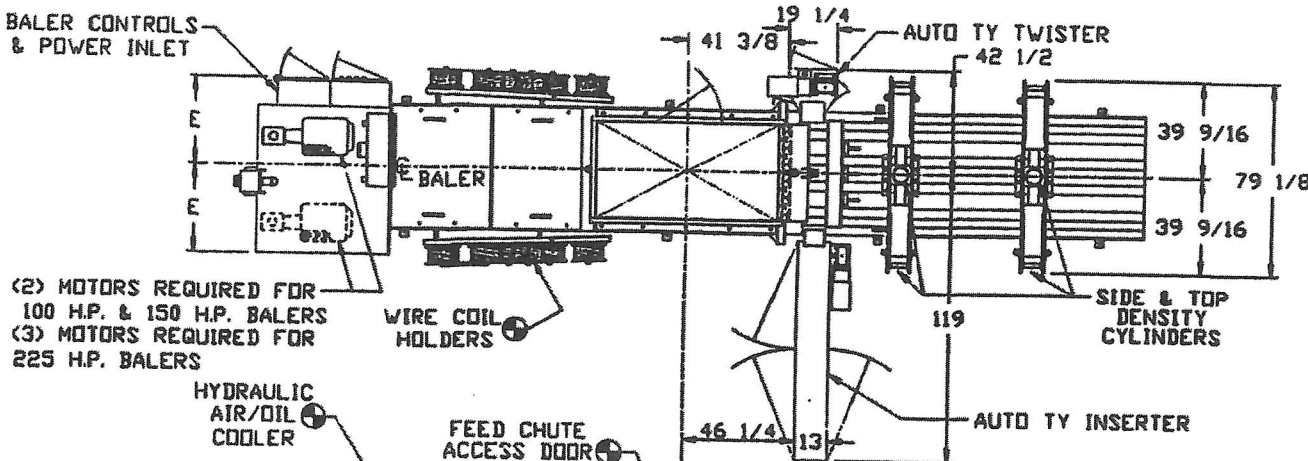
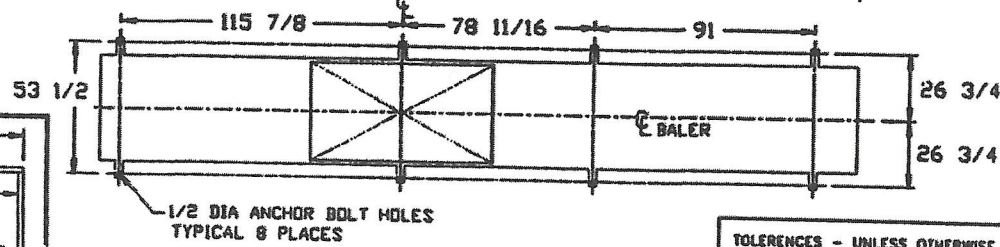
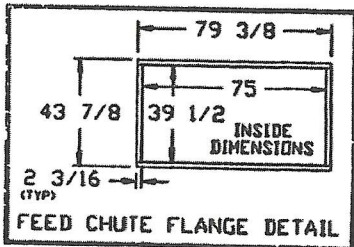
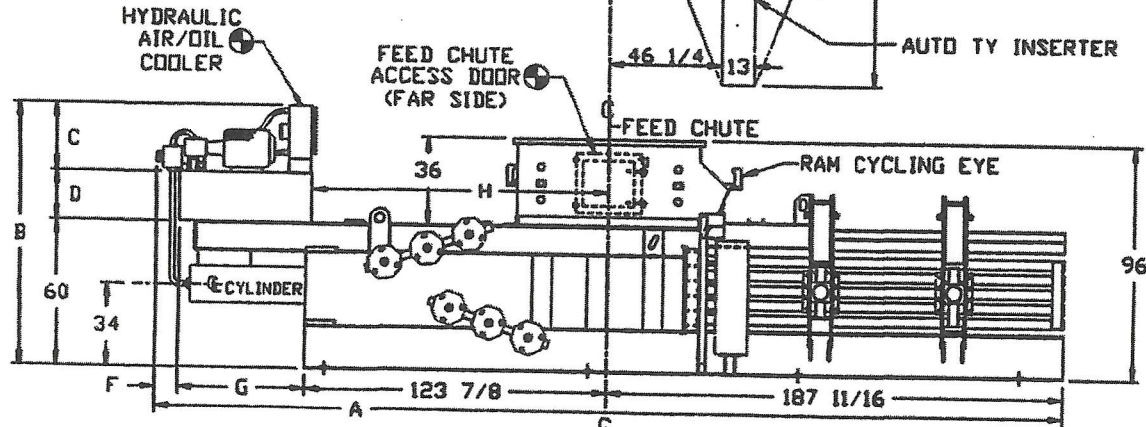


BALER CONTROLS & POWER INLET

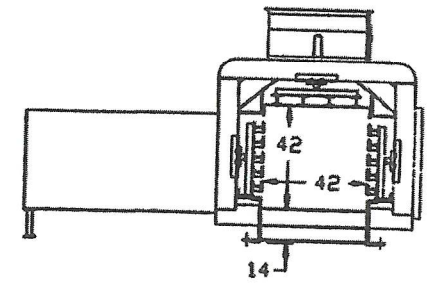


(2) MOTORS REQUIRED FOR 100 H.P. & 150 H.P. BALERS
(3) MOTORS REQUIRED FOR 225 H.P. BALERS



OPTIONAL EQUIPMENT SYMBOL

GROUP 23 (10" CYLINDER)				
EO	1694	2307	3209	4392
HP	50	75	100	150
A	373 7/16	371 7/16	392 15/16	393 15/16
B	119	125 1/4	115	121 1/4
C	34 1/2	40 3/4	34 1/2	40 3/4
D	24 1/2	24 1/2	20 1/2	20 1/2
E	36	36	42 1/2	44
F	15	13	14	15
G	46 7/8	46 7/8	67 3/8	67 3/8
H	121 3/4	121 3/4	121 3/4	121 3/4
GROUP 24 (12" CYLINDER)				
EO	1627	2266	3142	4557
HP	75	100	150	225
A	371 7/16	392 15/16	393 15/16	406 7/16
B	125 1/4	115	121 1/4	121 1/4
C	40 3/4	34 1/2	40 3/4	40 3/4
D	24 1/2	20 1/2	20 1/2	20 1/2
E	36	42 1/2	44	50
F	13	14	14	14
G	46 7/8	67 3/8	67 3/8	95 7/8
H	121 3/4	121 3/4	121 3/4	121 3/4



BALER CONFIGURATION
BALER - STANDARD
AUTO TY - STANDARD

B	06-26	5	ADDED DOORS
A	07-26	4	ADD 6-WIRE TY
NO.	ZONE	DATE	IN.
REMARKS			

Balemaster
DIV. OF EAST CHICAGO MACHINE TOOL CORP
CROWN POINT, INDIANA

100G BALER
75 in. FEED CHUTE

DO NOT SCALE WORK TO DIMENSIONS SCALE: 1=50

B/M REQ'D YES NO

DR. GOLINSKI CH. APP.

5-27-93 DATE: 234B0109-00

TOLERANCES - UNLESS OTHERWISE SPECIFIED:
FRACTIONAL ± 1/64
DECIMAL 0.000 ±0.005
DECIMAL 0.00 ±0.01



THIS DRAWING IS THE PROPERTY OF EAST CHICAGO MACHINE TOOL CORP. THE INFORMATION ENCLOSED HEREIN IS NOT TO BE REPRODUCED, COPIED OR OTHERWISE DISPOSED OF, DIRECTLY OR INDIRECTLY AND IS NOT TO BE USED IN WHOLE OR IN PART TO ASSIST IN MAKING OR TO FURNISH ANY INFORMATION FOR THE MAKING OF DRAWINGS, PRINTS, APPARATUS, OR PARTS THEREOF, EXCEPT AS SPECIFICALLY AUTHORIZED IN WRITING BY EAST CHICAGO MACHINE TOOL CORP.

AS WITH ANY OTHER PIECE OF EQUIPMENT, ADEQUATE CLEARANCE SHOULD BE PROVIDED FOR USUAL CLEANING, SERVICE AND MAINTENANCE OPERATIONS.

h g i o d c b a