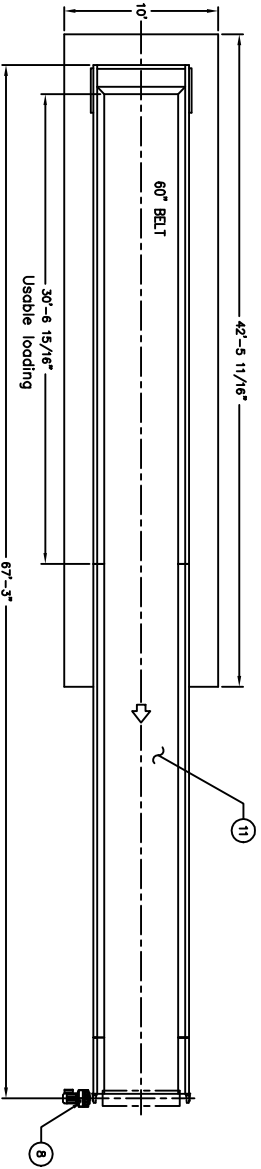
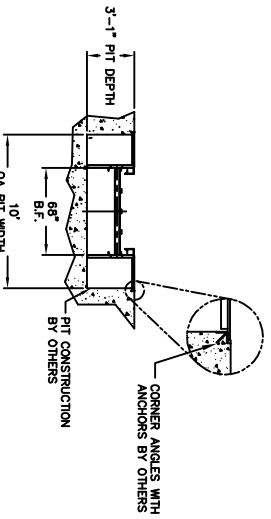


REV	DESCRIPTION	DATE	BY
01	RELEASE FOR APPROVAL	9/17/04	

**REVISIONS**



- ▲ MOTOR/GEARBOX SPECIFICATIONS:  
H.P.: 15  
480V/50/60HZ  
BELT SPEED: 50 FPM
- ▲ CHAIN BELT ASSEMBLY SPECIFICATIONS:  
CHAIN/BELT: S&W-3, 6\"/>

ITEM	QTY	DESCRIPTION
15	1	UPPER SUPPORT LEG
14	1	LOWER SUPPORT LEG
13	AS REQ.	PROTECTIVE BOTTOM GUARDS (IF ABOVE GRADE)
12	AS REQ.	PROTECTIVE SIDE GUARDS (IF ABOVE GRADE)
11	1	CHAIN BELT ASSEMBLY, ROQ-3
10	2	CHAIN OLDS
9	2	E-STOP BUTTONS - SHIPS LOOSE - FIELD INSTALL
8	1	DRIVE MOUNT ASSEMBLY
7	1	HEAD SECTION, ROQ-3, 68 B.F., 3\"/>

ITEM	QTY	DESCRIPTION
6	1	NOSE OVER, 45 DEGREE, ROQ-3, 68 B.F.
5	3	INCLINE SECTION, ROQ-3, 68 B.F., 10\"/>

- ① Hidden, Unintentionally Omit, Omit on the basis of an approved "List" of items to be excluded.
- ② Hidden, Unintentionally Omit, Omit on the basis of an approved "List" of items to be excluded.

**NOTES:**  
 1. Hidden, Unintentionally Omit, Omit on the basis of an approved "List" of items to be excluded.  
 2. Hidden, Unintentionally Omit, Omit on the basis of an approved "List" of items to be excluded.  
 3. Hidden, Unintentionally Omit, Omit on the basis of an approved "List" of items to be excluded.  
 4. A SECTION PROVIDES AN INDICATOR OF THE POSITION OF THE PARTS AND DIMENSIONS OF THE PARTS.

**NOTE**  
 Detailing, Production, and Component Purchasing will NOT Begin Until One (1) Set of Drawings has been Approved. Signatures must be provided to Sierra International

**APPROVAL**  
 By: \_\_\_\_\_  
 In Charge

**FOR APPROVAL**

SHOP ASSEMBLED IN TWO SECTIONS WITH BELT INSTALLED

Project:	DATA GUARD	Date:	08 B.F. S&W-3 BAKER FEED CONNECTOR
Location:	CHICAGO, IL	Rev:	THIS
Customer:	VILCO	Rev. #	04647-C2
City/State:	MESSENY	Date:	09/17/04
Drawn:	BALABUSTRA BLUE	Scale:	AS NOTED DRAWING
Check:		Scale:	1/4" = 1'
Appr.:		Scale:	1/4" = 1'



Karl W. Schmidt & Associates, Inc.  
 3600 E. 95th Avenue, Suite 200  
 Greenwood Village, CO 80120  
 Phone: (303) 751-7400  
 Fax: (303) 751-7401  
 Email: kws@kwsai.com  
 Website: www.kwsai.com

D200629-02

2

1

1

A B C D

8 7 6 5 4 3 2 1

8 7 6 5 4 3 2 1

8 7 6 5 4 3 2 1

8 7 6 5 4 3 2 1

8 7 6 5 4 3 2 1

8 7 6 5 4 3 2 1

8 7 6 5 4 3 2 1

8 7 6 5 4 3 2 1